

– Made in Germany –

SUSIS[®]
A. Schröder & Söhne GmbH u. Co. KG

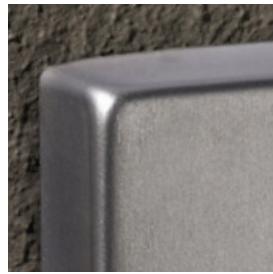


PURE

**HINWEISSCHILDER
SIGNS**

MATERIAL (M)

- 10** = Edelstahl
stainless steel
- 20** = Edelstahl magnetisch
stainless steel magnetic
- 30** = Aluminium eloxiert
aluminium anodized



Quality forming

FORMAT (F)

- 1** = 85 x 155 mm
- 2** = 155 x 155 mm



85 x 155 mm



155 x 155 mm

TYP (TT)

- 30** = Kontrast
contrast
- 50** = farbig
colour



contrast



colour

BEFESTIGUNG/FIXING

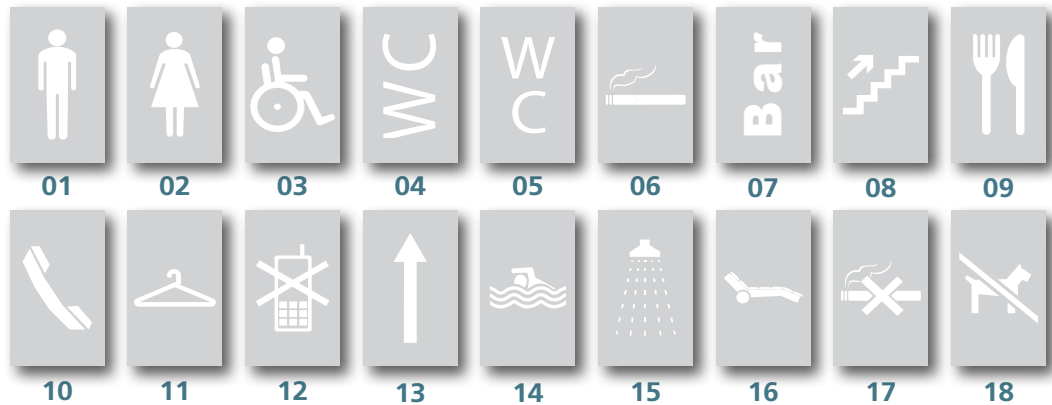
permanent

flexibel magnetic

Formschlüssige Permanentbefestigung oder flexible, magnetische Ausführung für z. B. hygienisch sensible Bereiche.

Form-fit permanent fixing or flexible magnetic system.

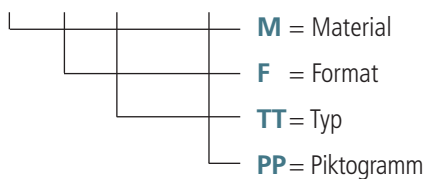
PICT (PP)



Weitere Piktogramme auf Anfrage! More pictos on request!

Bestell-Nr./Order-No.:

3.95.



Beispiel/Example: 3.95.20.130.02

- 20** = Material magnetisch/magnetic
- 1** = Format 85x155 mm
- 30** = Typ Kontrast/contrast
- 02** = Piktogramm "Woman"

